

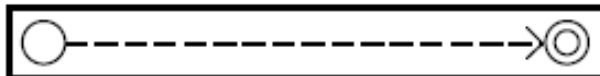
Orienteering Course

shac.org/camp-strake-leaders-guide

Sequence	Latitude	Longitude	Comments
Start	30.617822 N	95.254781 W	STEM Building
1	30.615464 N	95.253134 W	Future Chapel Site
2	30.617731 N	95.251278 W	North of Campsite #1
3	30.622100 N	95.251081 W	Trail NW of Training Ctr
4	30.623303 N	95.255112 W	West of Lake Spillway
5	30.625055 N	95.254448 W	Road from Archery to Lake
6	30.625747 N	95.260593 W	South of ATV building
7	30.622606 N	95.257953 W	NW of climbing tower
8	30.619964 N	95.257466 W	West side of silt pond
9	30.617326 N	95.258206 W	Road west of Campsite #17
Finish	30.618887 N	95.254777 W	West of Grand Pavilion

Tsuru Scout Camp Orienteering Clue Sheet

Start	△	■				○	
1	001		⊙			⊙	Clearing East edge
2	002		***			⊙	Linear thicket South edge
3	003		—/—			⊙	Path North edge
4	004		⊗			⊙	Thicket Southeast edge
5	005		—/—			⊙	Path North edge
6	006		/			⊙	Road South side
7	007		/			⊙	Road North side
8	008		⊙			⊙	Clearing North edge
9	009		/			⊙	Road North side
10	010		⊙			⊙	Clearing West edge



Tsuru Scout Camp Orienteering Course Punch Card Sheet

Control Point	Reference	Punch #	Punch
S	Friendly		
1	Cheerful	1	
2	Courteous	2	
3	Kind	3	
4	Clean	4	
5	Trustworthy	5	
6	Loyal	6	
7	Helpful	7	
8	Obedient	8	
9	Thrifty	9	
F	Loyal	10	